

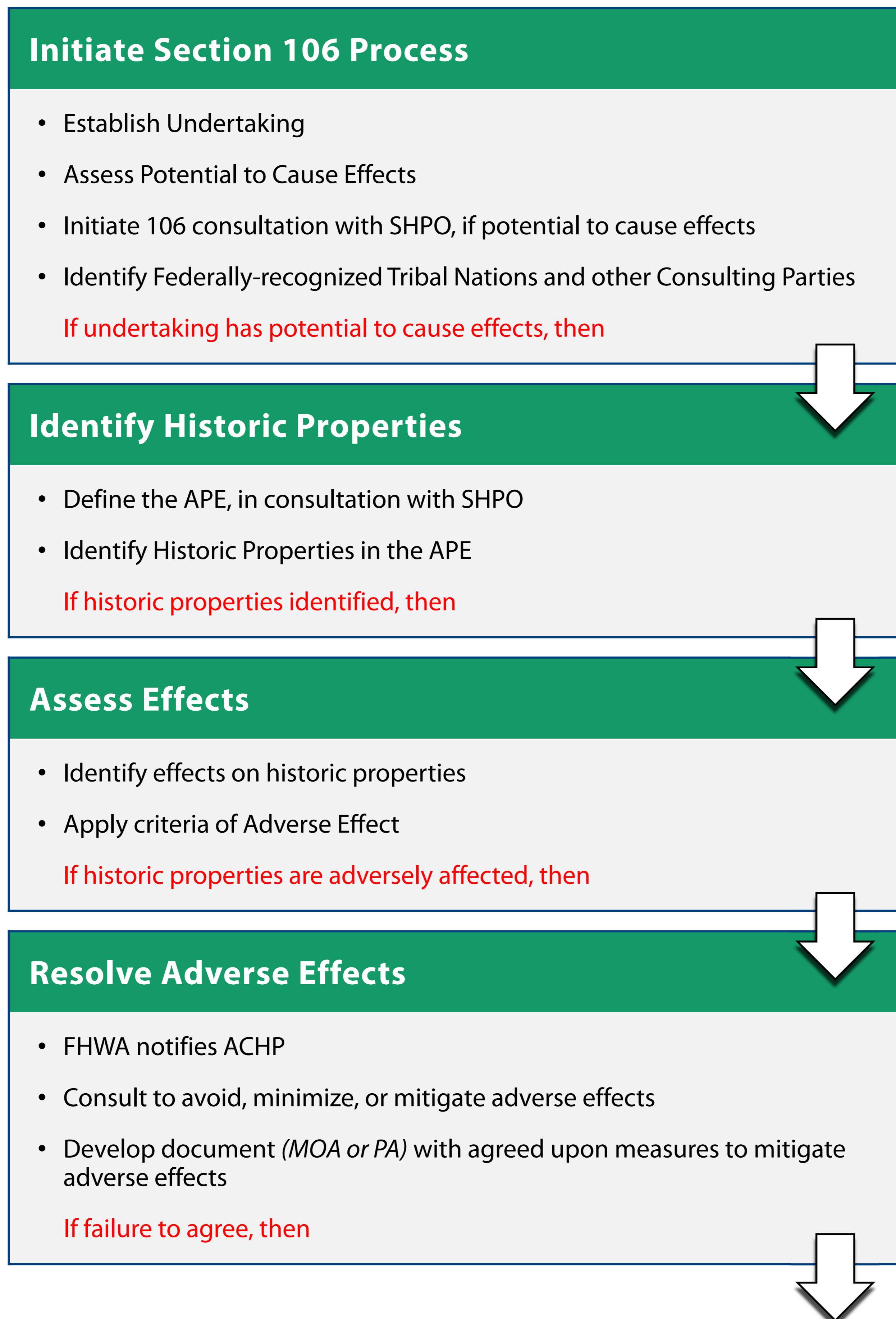
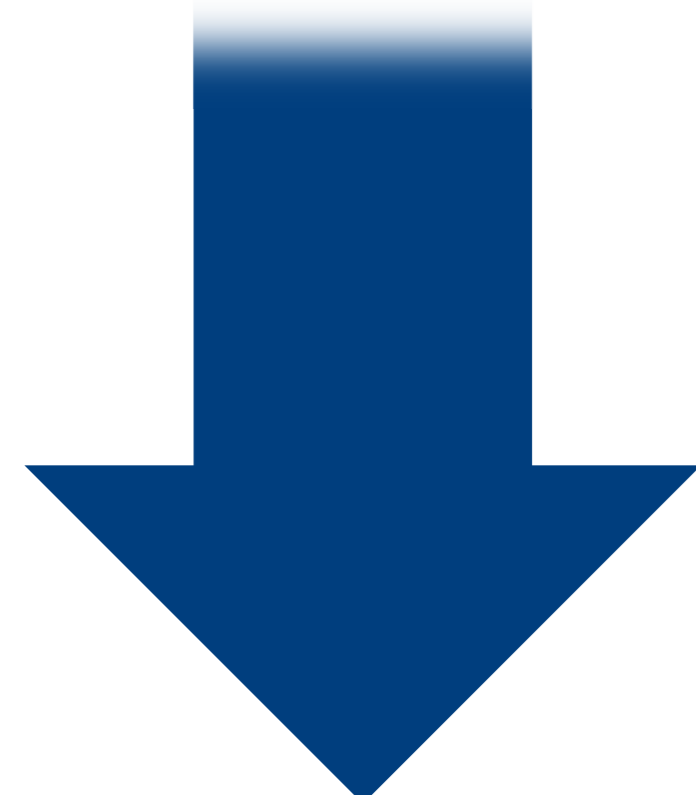
SHORE ROAD BRIDGE OVER HUTCHINSON RIVER PROJECT | P.I.N. X773.63

Section 106 of the National Historic Preservation Act of 1966 requires federal agencies to consider the effects of their actions on historic properties that are listed or eligible for listing in the National Register of Historic Places.

Involve the public



Consult with SHPO, Tribal Nations, and other Consulting Parties



Initiate Section 106 Process

- Establish Undertaking
 - Assess Potential to Cause Effects
 - Initiate 106 consultation with SHPO, if potential to cause effects
 - Identify Federally-recognized Tribal Nations and other Consulting Parties
- If undertaking has potential to cause effects, then

If no undertaking/no potential to cause effects; end process

Identify Historic Properties

- Define the APE, in consultation with SHPO
 - Identify Historic Properties in the APE
- If historic properties identified, then

If no historic properties identified; end of process

Assess Effects

- Identify effects on historic properties
 - Apply criteria of Adverse Effect
- If historic properties are adversely affected, then

If historic properties are not affected or are not adversely affected; end of process

Resolve Adverse Effects

- FHWA notifies ACHP
 - Consult to avoid, minimize, or mitigate adverse effects
 - Develop document (MOA or PA) with agreed upon measures to mitigate adverse effects
- If failure to agree, then

Signed MOA/PA filed with ACHP, end of NEPA process. Section 106 complete when all stipulations of MOA/PA fully implemented

Formal Advisory Council comments

Consulting Parties:

Certain Individuals and organizations with a demonstrated interest in the project may participate as consulting parties due to the nature of their legal or economic relation to the undertaking or affected properties, or their concern with the undertaking's effects on historic properties.

Meeting Handouts:

The meeting handouts have additional information about how interested citizens may participate in this process.

Historic Properties:

Defined as any district, site, building, structure, or object listed in, or eligible for inclusion in the National Register of Historic Places.

- Legend**
- APE – Area of Potential Effects
 - ACHP – Advisory Council on Historic Preservation
 - SHPO – New York State Historic Preservation Office
 - MOA – Memorandum of Agreement
 - PA – Programmatic Agreement
 - NEPA – National Environmental Policy Act

